



# E.T.C AUSTRALIA

Tel:+61 08 9437 1313 Fax:+61 08 9437 1103



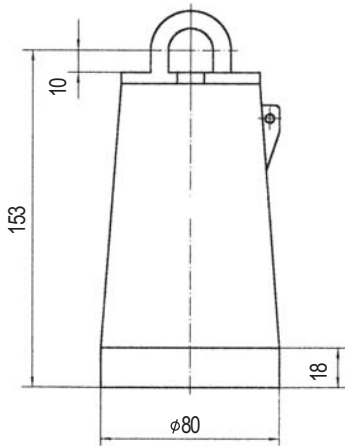
## ETC DBEC 24/630 Deadbreak Insulated Protective Cap

For 630A, Up to 24kV



DBEC 24/630  
Insulated Protective Cap

### DIMENSIONS(mm)



### Standard Packaging List:

|   |  |
|---|--|
| 1 | Insulated Protective Cap                 |
| 2 | Silicone Lubricant                       |
| 3 | Cleaning Paper                           |
| 4 | Installation Instruction Sheet           |
| 5 | Quality Certificate                      |
| 6 | 1.5mm <sup>2</sup> Copper Grounding Wire |

### General:

The ETC DBEC 24/630 Insulated Protective Cap meets the full requirements of DIN Standard 47636- "Separable Insulated Connector Systems" and provides insulated, fully shielded submersible protection for energized 24kV class deadbreak bushing interface. The cap is required for temporary or permanent installation on 24kV deadbreak bushings, junctions and other accessories having interface that conforms to DIN Standard 47636. If there is a reserved interface in the junctions or the bushings, the insulated protective cap must be used.

The molded EPDM semi-conducting shield maintains ground potential on the cap's surface when the drain wire is connected to a common ground.

### Electrical Characteristics:

|                               |       |
|-------------------------------|-------|
| Standard Voltage Class        | 24kV  |
| Maximum Rating Phase-to-phase | 24kV  |
| AC 50 Hz 1 Minute Withstand   | 54kV  |
| DC 15 Minute Withstand        | 48kV  |
| BIL and Full Wave Crest       | 125kV |
| 20kV Partial Discharge        | ≤10pC |

Electrical characteristics are in accordance with or exceed DIN 47636 and IEC 60502.4-1997s standards.



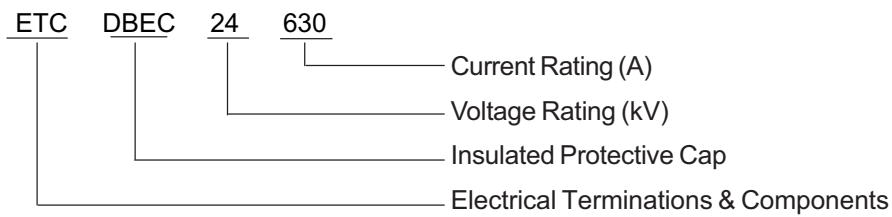
**630-14**

## Ordering Information:

To order a 630 amps, 24 kV Insulated Protective Cap kit. Please refer to the CODE INFORMATION and select the proper Catalogue Number below.

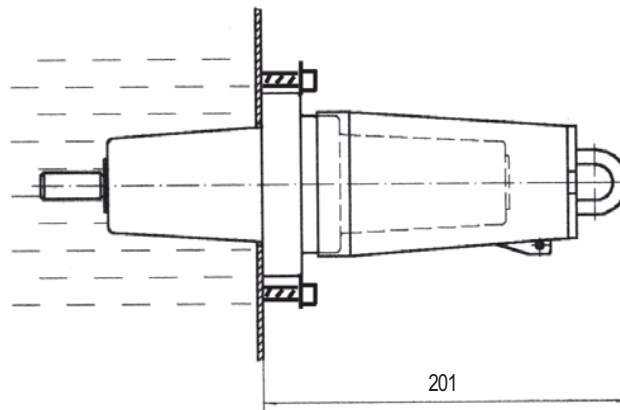
| Catalogue Number | Current Rating(A) |
|------------------|-------------------|
| ETC DBEC 24/630  | 630               |

## Code Information:








## Typical Arrangement:

630A Integrel Deadbreak Bushing + 630A Insulated Protective Cap



## Important:

 All of the spare interface must be covered with comparably rated Insulated Protective Cap  Red Shipping Cap  is not for energized operation . Do not replace the Insulated Protective Cap  with Red Shipping Cap  .

More Information for cable accessories, installation instructions, technical questions. Please contact your local Electrical Terminations & Components representative or visit our website <http://www.etcaustralia.com.au>