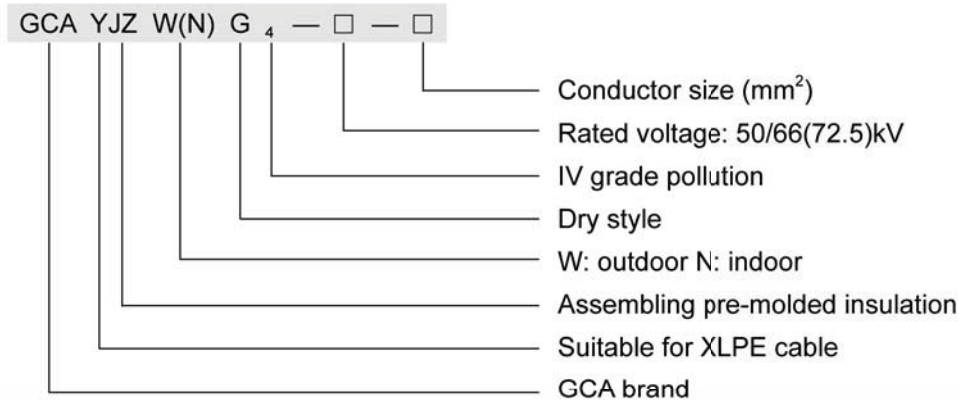


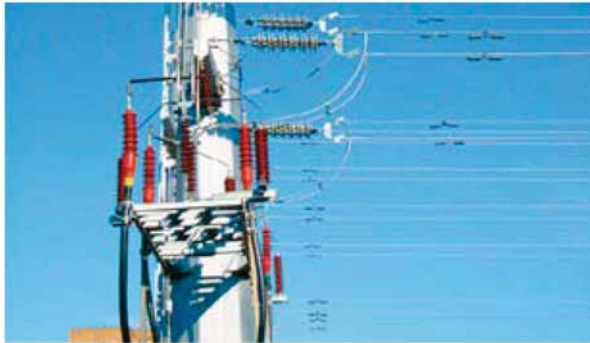
50/66 (72.5)kV Pre-molded dry style termination for XLPE cable

Selection guide:

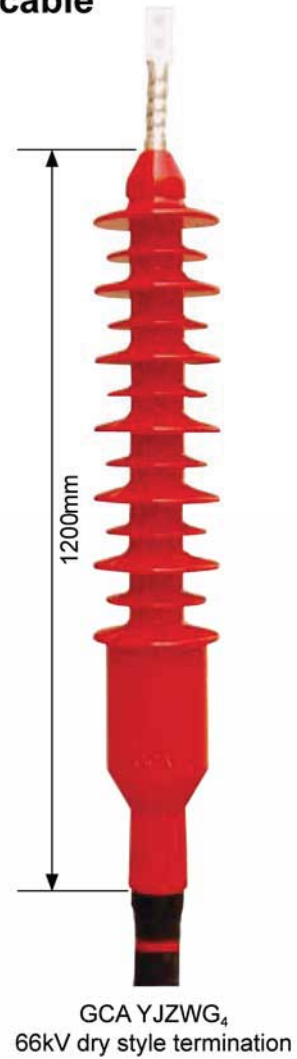


IV grade pollution: heavy polluted area and salt fog district within 1km away from coast. Salt concentration: >0.25mg/cm³

Example: 66kV XLPE cable, cross section of 240mm², outdoor dry style termination: GCA YJZWG₄-66-240



66kV dry style termination applied in Dalian



Main test data for 66kV dry style termination

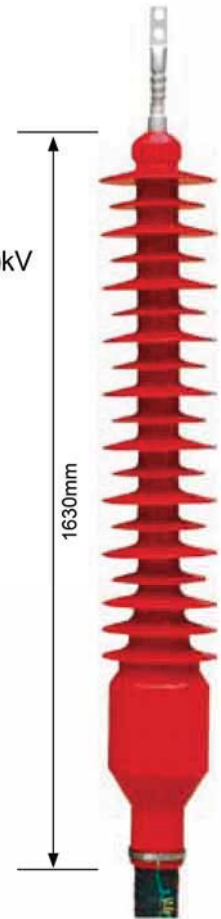
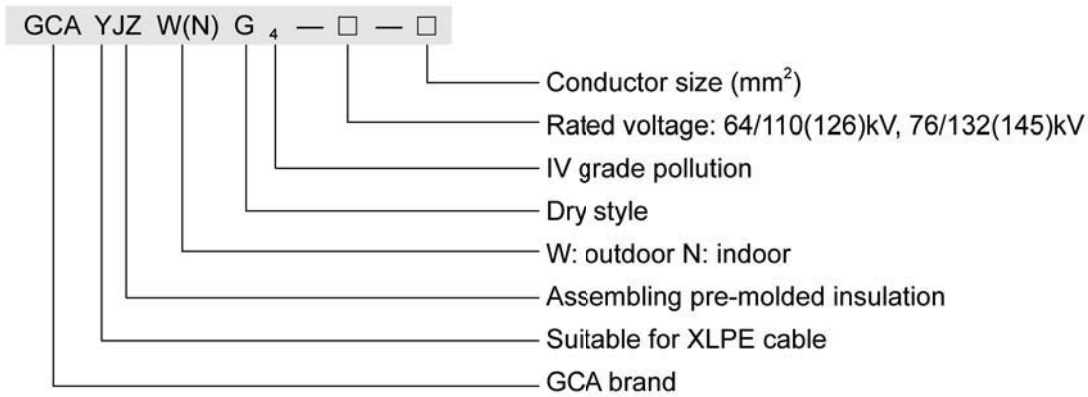
| | |
|--|-------------|
| Rated voltage (kV) | 50/66(72.5) |
| Altitude height limitation | <2000m |
| Conductor size (mm ²) | 240-1200 |
| Test item | Results |
| A.C. voltage withstand, 1min. | 195kV |
| Impulse voltage (10 positive and 10 negative impulses) | 450kV |
| Partial discharge | 75kV, <1pC |
| Heating cycles (100kV, 95°C-100°C, 8h heating, 16h cooling, 20 cycles) | OK |
| A.C. voltage withstand, 6h | 150kV |
| Creepage distance (mm) | 2280 |

Each kit must be tested at 75kV, partial discharge <1pC & 125kV, 30min. A.C. voltage withstand before leaving factory.

Test standard: IEC 60840:2004, GB/T 11017.3-2002 and IEEE Std48-1996

64/110(126)kV & 76/132(145)kV Pre-molded dry style termination for XLPE cable

Selection guide:



Example: 110kV XLPE cable, cross section of 630mm², outdoor dry style termination:
GCA YJZWG₄-110-630



110kV dry style termination installed in Xi'an



110kV dry style termination applied in Zhuhai

GCA YJZWG₄ 110kV dry style termination

Main test data for 110kV, 132kV, dry style termination

| Rated voltage (kV) | 64/110(126) | 76/132(145) |
|--|--------------|--------------|
| Altitude height limitation | <2000m | |
| Suitable temperature | -40°C–60°C | |
| Conductor size (mm ²) | 240-1200 | |
| Test item | Results | Results |
| Partial discharge | 96kV, <1pC | 114kV, <1pC |
| Impulse voltage (10 positive and 10 negative impulses) | 550kV | 650kV |
| A.C. voltage withstand, 15min | 160kV | 190kV |
| A.C. voltage withstand wet,1min | 185kV | — |
| Heating cycles (95°C-100°C, 8h heating, 16h cooling, 20 cycles) | 128kV | 152kV |
| A.C. voltage withstand, 6h | 192kV | — |
| A.C. voltage withstand, 1min | 230kV | 265kV |
| Creepage distance (mm) | 3910 | 3910 |
| Tests before leaving factory: partial discharge | 96kV, <1pC | 114kV, <1pC |
| A.C. voltage withstand | 160kV, 30min | 190kV, 30min |

Test standard: IEC 60840:2004, GB/T 11017.3-2002, and IEEE Std48-1996